
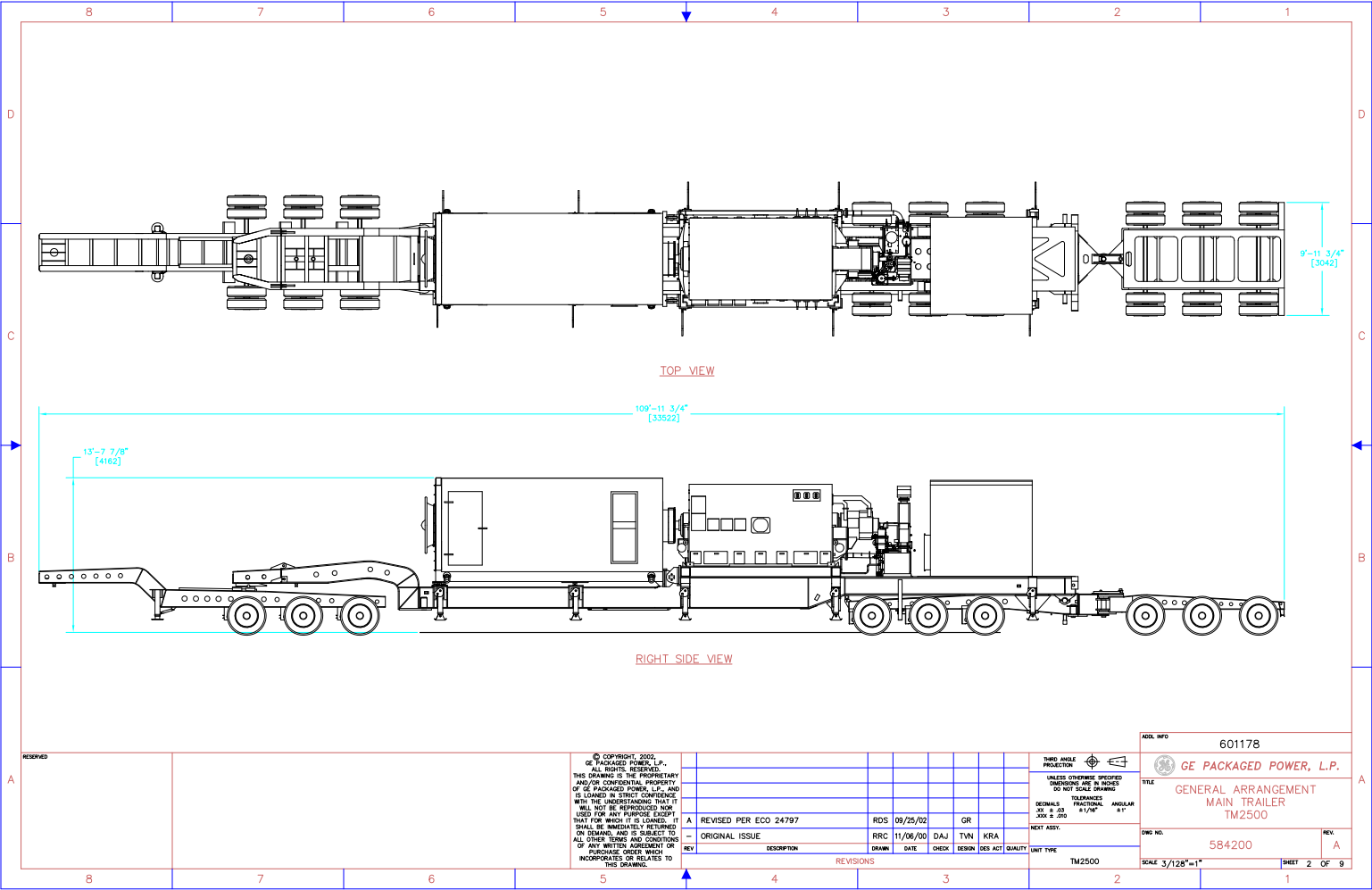
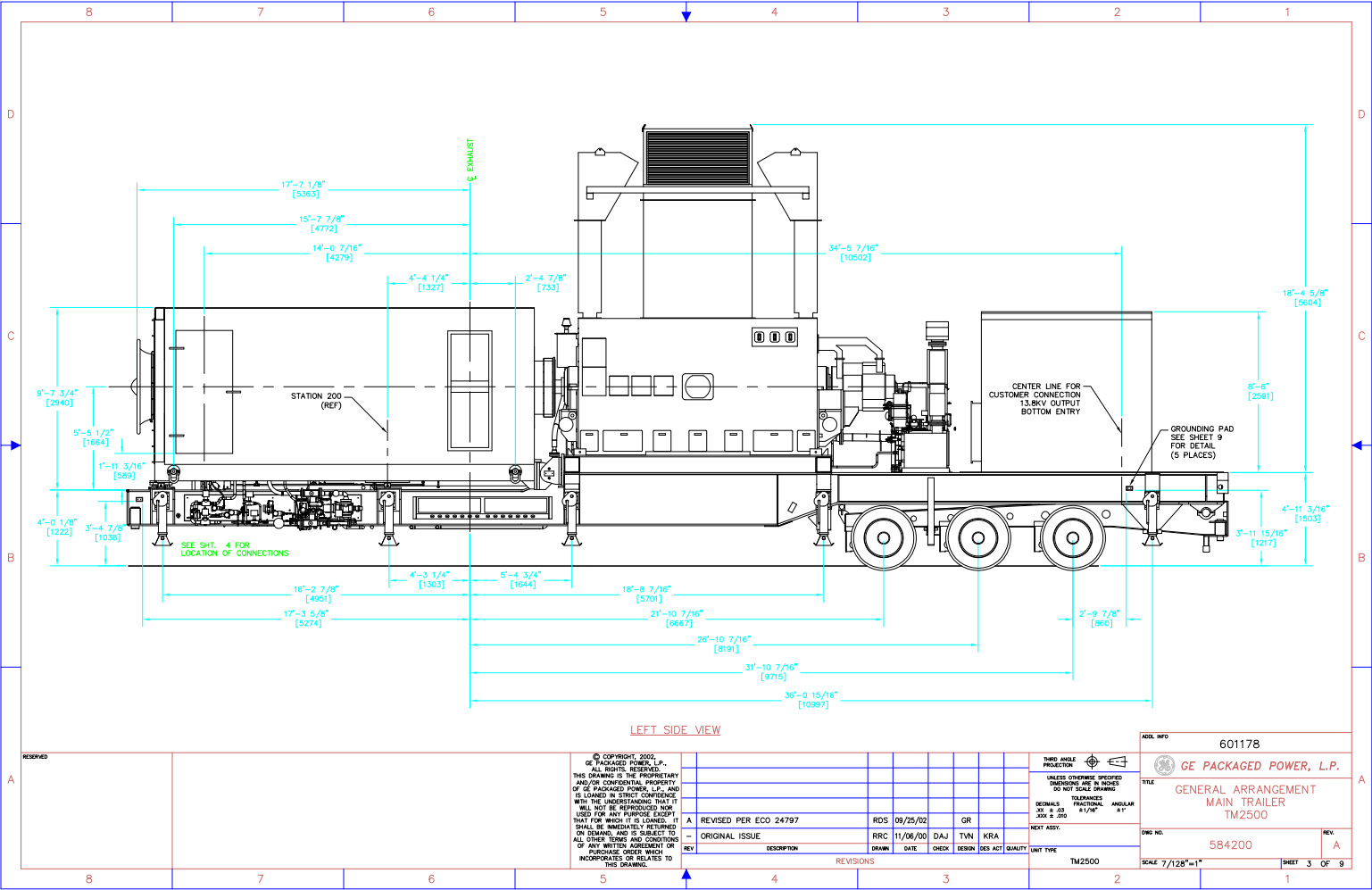


NOTES:
1. ALL DIMENSIONS MAY VARY DUE TO CAMBER IN TRAILER.
2. DIMENSIONS AND VALUES IN () ARE SI UNITS AND ARE GIVEN FOR REFERENCE ONLY. EQUIPMENT WILL BE DESIGNED AND MANUFACTURED USING ENGLISH UNITS ONLY.

RESERVED										© COPYRIGHT, 2002, GE PACKAGED POWER, L.P. ALL RIGHTS RESERVED. THIS DRAWING IS THE PROPRIETARY AND/OR CONFIDENTIAL PROPERTY OF GE PACKAGED POWER, L.P. AND IS LOANED IN STRICT CONFIDENCE WITH THE UNDERSTANDING THAT IT WILL NOT BE REPRODUCED NOR USED FOR ANY PURPOSE EXCEPT THAT FOR WHICH IT IS LOANED. IT SHALL BE IMMEDIATELY RETURNED ON DEMAND, AND IS SUBJECT TO ALL OTHER TERMS AND CONDITIONS OF ANY WRITTEN AGREEMENT OR PURCHASE ORDER WHICH INCORPORATES OR RELATES TO THIS DRAWING.																				THIRD ANGLE PROJECTION										UNLESS OTHERWISE SPECIFIED DIMENSIONS ARE IN INCHES DO NOT SCALE DRAWING TOLERANCES DECIMALS FRACTIONAL ANGULAR .001 & .03 .01/32" .1°										 GE PACKAGED POWER, L.P.																																																																																																																																																																																																																																																																																																																																																																																																																																																																																																																																																																																																																																																																																																																																																																																																																																																																																																																																																																																																																																																																																																																																																																																																																																																																																																																																																																																																																																																																																																																																																																																																																																																																																																																																																																																																																																																																																																																																																																																																																																																																																																																																																																																																																																																																																																																																																																																																																																																																																																																																																																																																																																																																																																																																																																																																																																																																																																																																																																																																																																																																																																																																																																																																																																																																																																																																																																																																																																																																																																																																																																																																																																																																																																																																																																																																																																																																																																																																																																																																																																																																																																																																																																																																																																																																																																																																																																																																																																																																																																																																																																																																																																																																																																																																																																																																																																																																																																																																																																																																																																																																																																																																																																																																																																																																																																																																																																																																																																																																																																																																																																																																																																																																																																																																																																																																																																																																																																																																																																																																																																																																																																																																																																																																																																																																																																																																																																																																																									
																				A										REVISED PER ECO 24797										RDS 09/25/02										GR										NEXT ASSY.										TITLE										GENERAL ARRANGEMENT MAIN TRAILER TM2500										DWG NO.										584200										REV.										A																																																																																																																																																																																																																																																																																																																																																																																																																																																																																																																																																																																																																																																																																																																																																																																																																																																																																																																																																																																																																																																																																																																																																																																																																																																																																																																																																																																																																																																																																																																																																																																																																																																																																																																																																																																																																																																																																																																																																																																																																																																																																																																																																																																																																																																																																																																																																																																																																																																																																																																																																																																																																																																																																																																																																																																																																																																																																																																																																																																																																																																																																																																																																																																																																																																																																																																																																																																																																																																																																																																																																																																																																																																																																																																																																																																																																																																																																																																																																																																																																																																																																																																																																																																																																																																																																																																																																																																																																																																																																																																																																																																																																																																																																																																																																																																																																																																																																																																																																																																																																																																																																																																																																																																																																																																																																																																																																																																																																																																																																																																																																																																																																																																																																																																																																																																																																																																																																																																																																																																																																																																																																																																																																																																																																																																																																																																																																			
										REV										DESCRIPTION										DRAWN										DATE										CHECK										DESIGN										DES ACT										QUALITY										UNIT TYPE										TM2500										SCALE										SHEET 1 OF 1																																																																																																																																																																																																																																																																																																																																																																																																																																																																																																																																																																																																																																																																																																																																																																																																																																																																																																																																																																																																																																																																																																																																																																																																																																																																																																																																																																																																																																																																																																																																																																																																																																																																																																																																																																																																																																																																																																																																																																																																																																																																																																																																																																																																																																																																																																																																																																																																																																																																																																																																																																																																																																																																																																																																																																																																																																																																																																																																																																																																																																																																																																																																																																																																																																																																																																																																																																																																																																																																																																																																																																																																																																																																																																																																																																																																																																																																																																																																																																																																																																																																																																																																																																																																																																																																																																																																																																																																																																																																																																																																																																																																																																																																																																																																																																																																																																																																																																																																																																																																																																																																																																																																																																																																																																																																																																																																																																																																																																																																																																																																																																																																																																																																																																																																																																																																																																																																																																																																																																																																																																																																																																																																																																																																																																																																																																																																																			





LEFT SIDE VIEW

REVISIONS

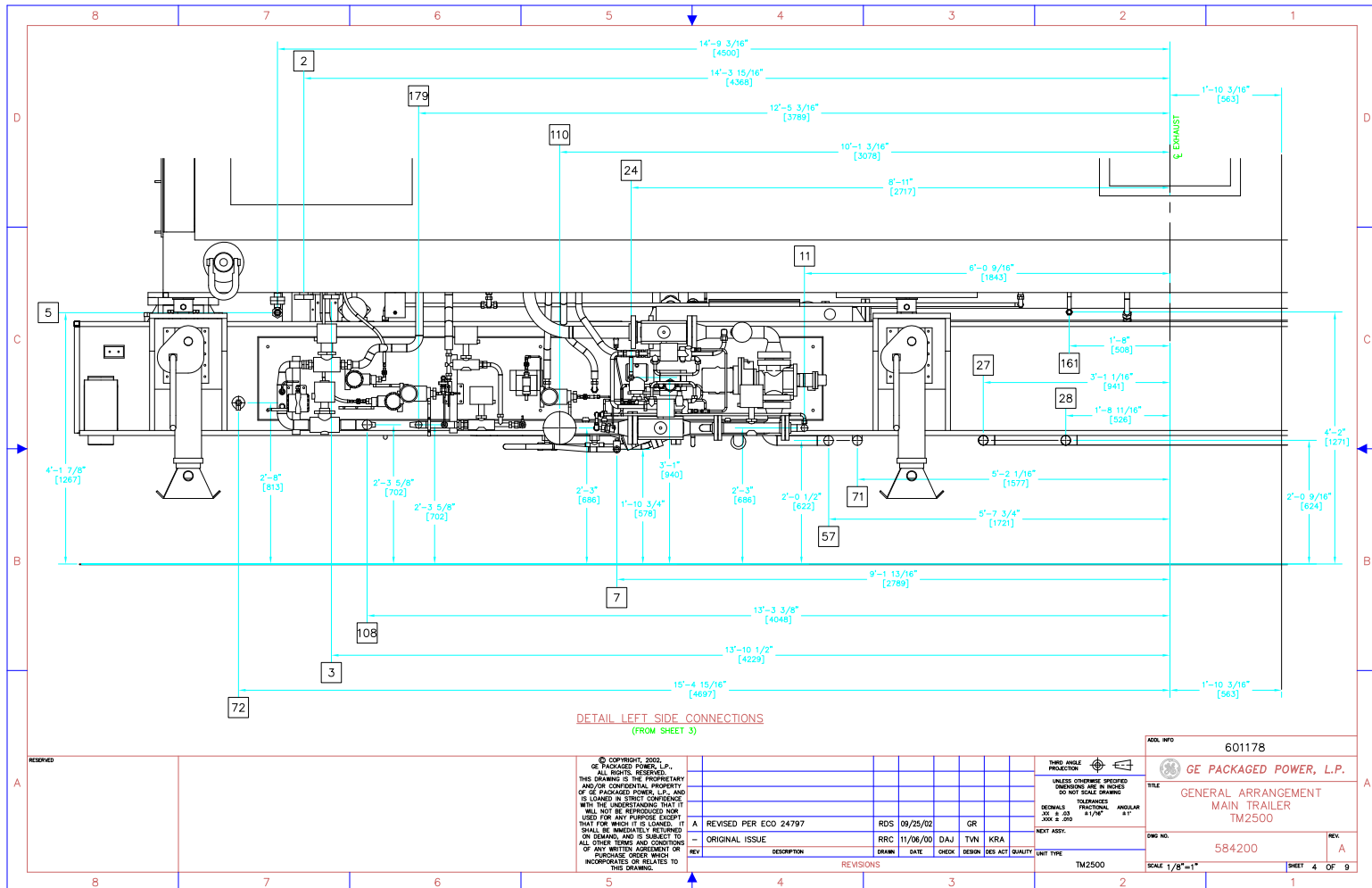
A

© COPYRIGHT, 2002,
GE PACKAGED POWER, L.P.
ALL RIGHTS RESERVED.
THIS DRAWING IS THE PROPRIETARY
AND/OR CONFIDENTIAL PROPERTY
OF GE PACKAGED POWER, L.P. AND
IS LOANED IN STRICT CONFIDENCE
WITH THE UNDERSTANDING THAT IT
WILL NOT BE REPRODUCED NOR
USED FOR ANY PURPOSE EXCEPT
THAT FOR WHICH IT IS LOANED. IT
SHALL BE IMMEDIATELY RETURNED
ON DEMAND, AND IS SUBJECT TO
ALL OTHER TERMS AND CONDITIONS
OF ANY WRITTEN AGREEMENT OR
PURCHASE ORDER WHICH
INCORPORATES OR RELATES TO
THIS DRAWING.

REV	DESCRIPTION	DATE	CHECK	DESIGN	DESIGN	QUALITY	UNIT	TYPE
A	REVISED PER ECO 24797	RDS 09/25/02	GR					
1	ORIGINAL ISSUE	RRC 11/06/00	DAJ	TVM	KRA			
2								
3								
4								
5								
6								
7								
8								

THIRD ANGLE PROJECTION	
UNLESS OTHERWISE SPECIFIED DIMENSIONS ARE IN INCHES DO NOT SCALE DRAWING	
DRAWING NO. & 03 JAN 8 200	FRACTIONAL ANGULAR 1/16"

ADD. INFO	601178
TITLE	GE PACKAGED POWER, L.P. GENERAL ARRANGEMENT MAIN TRAILER TM2500
DWG. NO.	584200
SCALE	7/128"=1"
SHEET	3 OF 9



ITEM #	LOCATION	DESCRIPTION	PART #	QUANTITY	NOTE
MAIN TRAILER					
1	GENERATOR LUBE OIL FILTER	FILTER ELEMENT	PH518-12-CG	1	
2	TURBINE LUBE OIL FILTERS	FILTER ELEMENT	PH414-12-CG	2	
3	TURBINE MODULE CLEVIS	PIN SHM	554618	1	⊙
		T-CLEVIS SHM	554614	1	⊙
		O-CLEVIS SHM	554618	1	⊙
		1"-BUNC X 3 1/2" BOLT	401271	4	+
		1" LOCK WASHER	J00631	4	+
		1" FLAT WASHER	J00625	4	+
4	TURBINE MODULE SUPPORT PAD	JACKING PAD	LL-22	4	+
		SHM	554695	4	+
		1"-BUNC X 6 1/2" BOLT	J03283	2	+
		1"-BUNC X 9" BOLT	J05499	2	+
		1" FLAT WASHER	J00625	8	+
		1" LOCK WASHER	J00631	4	+
5	GENERATOR	COUPLING GUARD	W/ ENCLOSURE	1	+
		GENERATOR COUPLING GUARD FLANGE & HARDWARE	SUPPLIED BY BRUSH		+
		FILTER/SILENCER BOX & HARDWARE			
		GASKET			
6	VENTILATION EXHAUST SILENCER	FILTER ELEMENT	J00248	36	
		3/8" TITUNG X 1 1/4" BOLT	J00399	72	
		3/8" FLAT WASHER	J00408	36	
		3/8" LOCK WASHER	J00473	36	
7	TURBINE EXHAUST SILENCER	1/8" T X 2" W NEOPRENE GASKET	J04069	20	
		1/2" TITUNG X 1 1/2" ASTM-A 193 BOLT OR SS	J04769	48	+
		1/2" FLAT WASHER	J00399	96	+
		1/2" LOCK WASHER	J00405	48	+
		1/2" NUT ASTM-A 194 OR SS	J02353	48	+
		1/8" T X 3" W FIBERGLASS GASKET	EXH04T18X3	50	+
8	COMBUSTION AIR INLET INTERFACE	3/8" TITUNG X 1 1/4" BOLT	J00248	60	+
		3/8" TITUNG NUT	J00473	60	+
		3/8" FLAT WASHER	J00399	120	+
		3/8" LOCK WASHER	J00408	60	+
9	VENTILATION AIR INLET INTERFACE	SILICON SEALANT		5	TUBES
		3/8" TITUNG NUT	J00473	36	+
		3/8" FLAT WASHER	J00399	72	+
		3/8" LOCK WASHER	J00408	36	+
10	AIR FILTER DOCKING STATION	5/8" TITUNG X 1 1/2"	J00279	6	
		5/8" WASHER LOCK	J00410	6	
		5/8" WASHER FLAT	J00401	12	
11	EXHAUST DOCKING STATION	3/4" TITUNG X 4" STUD	96991	16	
		3/4" TITUNG HEAVY HEX NUT	92318	32	
12	MAIN DRIVE COUPLING	SPOOL	DB-412R22	1	+
13	LANDING GEAR SUPPORT	SUPPORT BLOCK	584675	10	+
14	QUICK DISCONNECT CABLES	CABLE			AS REQ'D
AUXILIARY TRAILER					
1	GAS FUEL SHUT OFF VALVE	3" BALL VALVE	J00123	1	+
2	GAS FUEL HOSE INTERCONNECT	5/8" STUD X 3 1/2" LG.	92307	8	
		3/8" TITUNG HEAVY HEX NUT	92317	16	
		3"-300# GASKET	CG-3J	1	
3	QUICK DISCONNECT CABLES	CABLE			AS REQ'D
EXHAUST SILENCER TRAILER					
1	EXTENSION DUCT	1/2" TITUNG X 1" ASTM-A 193 BOLT OR SS	J02664	80	+
		1/2" FLAT WASHER	J00395	80	+
		1/2" LOCK WASHER	J00405	80	+
AIR FILTER TRAILER					
1	QUICK DISCONNECT CABLES	CABLE			AS REQ'D
MISCELLANEOUS TOOLS					
1	ROTALIGN LASER EQUIPMENT	COMPUTER KIT	AL3501	1	#
		BOLT HOLE BRACKET	AL3106	1	#
		5 METERS RECEIVER CABLE	AL3581-5	1	#
		MAGNETIC BRACKET SET	AL3112	1	#
2	JACKING OIL PUMP	POWER PACK	CWP-1M2XXX	1	#
3	ENERPAC HYD PUMP	115 VAC ECONOMY HYD PUMP W/ CONTAINER	PUJ-1201B	1	#
4	ENERPAC HYD JACK	50 TON CAPACITY CYLINDER (5/8" TRAVEL LENGTH)	RSM-500	2	#
5	ENERPAC HYD JACK	50 TON CAPACITY CYLINDER (6 1/4" TRAVEL LENGTH)	RC-500	2	#

⊙ ALL SHIMS MUST BE MARKED TO INDICATE LOCATION WHEN REMOVED FROM UNIT

* PARTS ARE ALREADY ORDERED. NEED TO PULL AND VERIFY ITEMS ARE SHIPPED W/ UNIT

TOTAL OF 4 SETS WERE ORDERED FOR 20 UNITS

RESERVED

CUSTOMER INFORMATION

© COPYRIGHT, 2001, GE PACKAGED POWER, L.P.

THIS DRAWING IS THE PROPRIETARY AND/OR CONFIDENTIAL PROPERTY OF GE PACKAGED POWER, L.P., AND IS LOANED IN STRICT CONFIDENCE WITH THE UNDERSTANDING THAT IT WILL NOT BE REPRODUCED NOR USED FOR ANY PURPOSE